

**Cut / Recovery Summary**  
**Job Number: 399**  
**6/21/2023**



**Well Information**

<b>Company</b>	The University of Utah	<b>Well Name</b>	16B(78)-32	<b>Hole Size</b>	9 1/2 (Rat Hole 8 3/4)
<b>Core Depth (ft)</b>	9800.000	<b>Well Location</b>		<b>Hole Angle</b>	
<b>Formation</b>	Granite	<b>Contractor</b>	Frontier 16	<b>Company Rep</b>	Leroy Swearingen
				<b>Representatives</b>	Mark Eldridge, Christopher Vega
<b>Total Cut (ft)</b>	152.00	<b>Total Recovery (ft)</b>	135.75	<b>Recovery %</b>	89.31
				<b>ROP f/hr</b>	1.178

**Core Summary**

<b>Run Number</b>	1	<b>No. Tubes</b>		<b>From (ft)</b>	9800.00
<b>Cut (ft)</b>	17.00	<b>Formation</b>	Granite	<b>To (ft)</b>	9817.00
<b>Recovery (ft)</b>	16.60	<b>User</b>	chrisvega	<b>Time</b>	12:16
<b>BHA Name - Utah Forge #1</b>					
No Deployments. 9817.000 ft - ROP fell off. Pull out of hole. Pulled to 430k then fell off to 350k, pulled tight again to 410k. 9805.000 ft - Weight indicator off. Increase wob to 13k					
<b>Drill Ahead - - 9823.00</b>					
<b>BHA Name - Utah Forge #1</b>					
<b>Run Number</b>	2	<b>No. Tubes</b>	2	<b>From (ft)</b>	9823.00
<b>Cut (ft)</b>	30.00	<b>Formation</b>	Granite	<b>To (ft)</b>	9853.00
<b>Recovery (ft)</b>	28.40	<b>User</b>	markheldridge@yahoo.com	<b>Time</b>	10:59
<b>BHA Name - Utah Forge #1</b>					
Bit CCI-713 #3409-03 appears to have 30+ chipped cutters. Primary deployment tube deployed 5'-8' and Secondary deployment tube deployed 9'-11' in to run #2. 9853.000 ft - Was told to stage rotary and WOB within the last few feet to get a step test. Rotary went from 32 to 40 to 45 to 50 and WOB went from 7.5 to 8 to 8.5 to 9 to 9.5 to 10 to 10.5 to 11 to 11.5 to 12 .					
<b>Drill Ahead - - 10250.00</b>					
<b>BHA Name - Utah Forge #1</b>					



Drill ahead 397'

<b>Run Number</b>	3	<b>No. Tubes</b>	2	<b>From (ft)</b>	10250.00
<b>Cut (ft)</b>	6.00	<b>Formation</b>	Granite	<b>To (ft)</b>	10256.00
<b>Recovery (ft)</b>	5.50	<b>User</b>	markheldridge@yahoo.com	<b>Time</b>	07:35

**BHA Name - Utah Fore BHA#3**

Bit # 4219-01. Primary deployed 3' in  
10256.000 ft - Made another.60 of a foot.weight started climbing from 13 to 14.6 with no drill off. Pulled over 405 on weight indicator. POOH.

**Drill Ahead - - 10264.00**

**BHA Name - Utah Fore BHA#3**

<b>Run Number</b>	4	<b>No. Tubes</b>	2	<b>From (ft)</b>	10264.00
<b>Cut (ft)</b>	8.00	<b>Formation</b>	Granite	<b>To (ft)</b>	10272.00
<b>Recovery (ft)</b>	4.60	<b>User</b>	markheldridge@yahoo.com	<b>Time</b>	07:59

**BHA Name - Utah Forge BHA#4**

Bit #3409-05 No Deployments.  
10270.000 ft - Rotating Head  
10272.000 ft - No Torque- No Drill off.POOH

**Drill Ahead - - 10274.00**

**BHA Name - Utah Fore BHA#3**

<b>Run Number</b>	5	<b>No. Tubes</b>	2	<b>From (ft)</b>	10274.00
<b>Cut (ft)</b>	30.00	<b>Formation</b>	Granite	<b>To (ft)</b>	10304.00
<b>Recovery (ft)</b>	27.95	<b>User</b>	chrisvega	<b>Time</b>	23:31

**BHA Name - Utah Forge #5**

Primary deployed at 8' and secondary stayed stationary.  
10292.000 ft - Shut down auto driller and continue coring with brake handle. Staging wob up.  
10300.000 ft - Tool joint in rotating rubber.  
10290.000 ft - Change rpm in 15 minute intervals as per Utah Forge.  
10277.000 ft - Increase rpm and wob as per Utah Forge  
10304.000 ft - End of run. Allow some wob to drill off before pulling off bottom. Did not see a visible break off bottom.  
10291.000 ft - Auto driller dumped wt from 11.50 to 13.5k instantly.

**Drill Ahead - - 10430.00**

**BHA Name - Utah Forge #5**

<b>Run Number</b> 6	<b>No. Tubes</b> 2	<b>From (ft)</b> 10430.00
<b>Cut (ft)</b> 30.00	<b>Formation</b> Granite	<b>To (ft)</b> 10460.00
<b>Recovery (ft)</b> 25.70	<b>User</b> markheldridge@yahoo.com	<b>Time</b> 22:55

**BHA Name - Utah Fore BHA#3**

Bit CCI-913 #3409-05  
 10445.000 ft - PSI up to 1031  
 10438.000 ft - 13-15K WOB  
 10458.000 ft - Rotating Head  
 10448.000 ft - Pump Pressure up and down . Zero the Diff to see if it would climb back with the PSI.  
 10460.000 ft - Rotated on bottom and pumped 30 minutes. Tool joint directly under rotating head. Pulled up 460 over. Came back down and no weight stack. Picked back up and pulled 450 over. Pulled tight the first stand. POOH.  
 10437.000 ft - WOB-10-11  
 10456.000 ft - Brought pump back to 380 GPM.  
 10431.000 ft - Pumps are oscillating.  
 10435.000 ft - 20:57 PSI went down then up to 741. At 21:50 PSI went up to 900 and then back down. Increase WOB per Utah Forge.

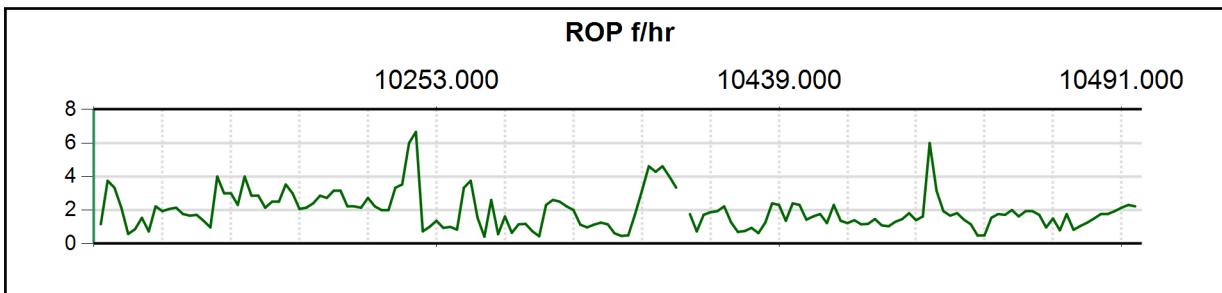
**Drill Ahead - - 10462.00**

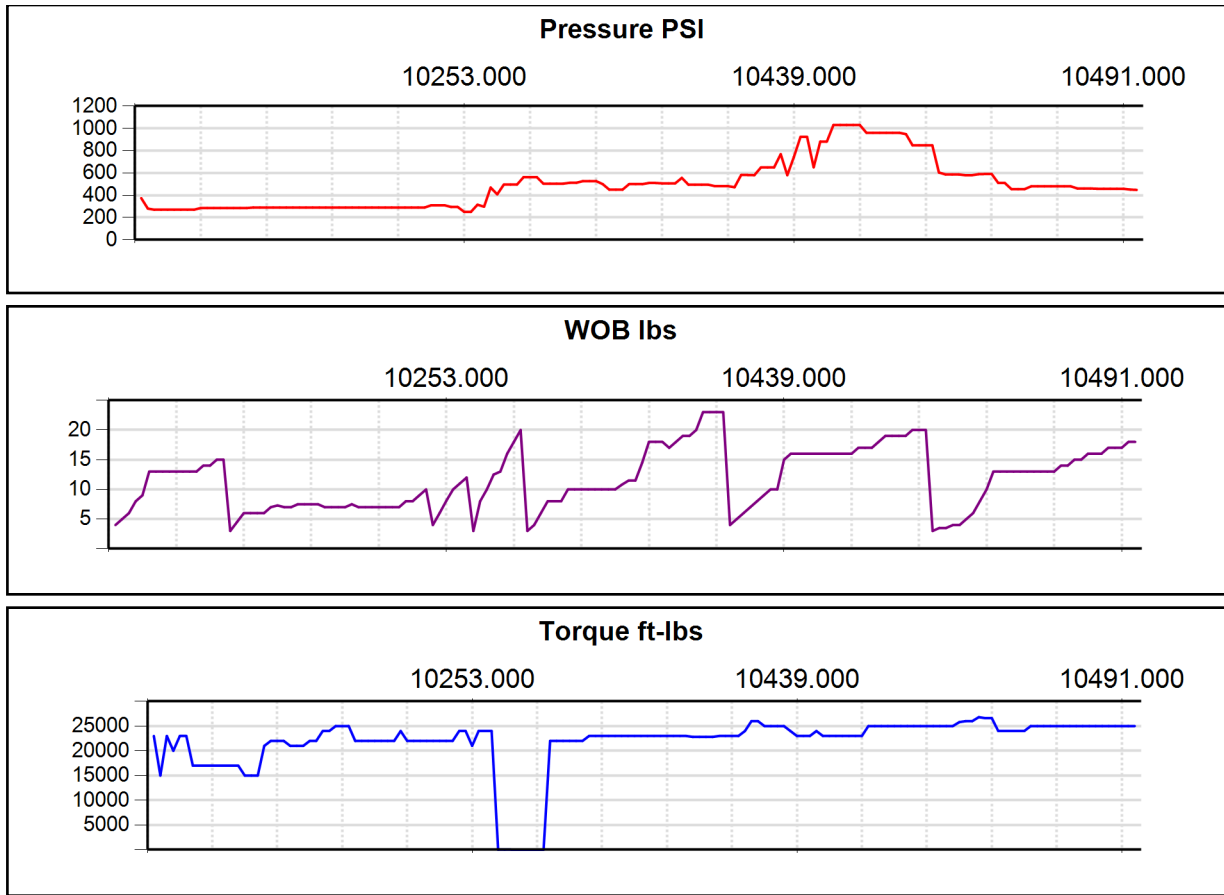
**BHA Name - Utah Forge #7**

<b>Run Number</b> 7	<b>No. Tubes</b> 2	<b>From (ft)</b> 10462.00
<b>Cut (ft)</b> 31.00	<b>Formation</b> Granite	<b>To (ft)</b> 10493.00
<b>Recovery (ft)</b> 27.00	<b>User</b> chrisvega	<b>Time</b> 22:33

**BHA Name - Utah Forge #7**

Bit CCI-713 #3409-03 has damaged cutters no plugged jets. Primary deployment tube deployed at 6' and Secondary deployment tube deployed at 8-9'.  
 10474.000 ft - Slow pump rate as per Utah Forge.  
 10493.000 ft - End of run. Allow wob to drill off from 18k to 11k wob. (About 30 minutes). No visible break off bottom due to hole drag.





## Status Changes

Status Date	Time	Status	Comment
5/12/2023	9:27	Upcoming	Paul called to ensure bits and sensors left rig from Core interval #1. Estimates to be a 2nd interval 1.5-2 weeks.
5/22/2023	9:28	Drilling to Core Point	Lerory thinks Core point 4-5 days.
5/24/2023	9:29	Logging	Currently logging @ 8585' next Core point 9810' Leroy estimates PU Coring tools Friday night. check back in around supper time.
5/24/2023	18:21	Drilling to Core Point	Getting ready to RIH with drilling BHA best case PU tools Saturday morning
5/25/2023	8:49	Drilling to Core Point	Drilling ahead @ 9148 could be at Core Point and ready to PU BHA Friday night call back in a few hours once they know more
5/25/2023	11:26	N/U Pressure Test	POOH to do Mandatory BOP test, lead hand can get to SLC tonight, still thinking could PU tools Friday night.
5/25/2023	11:56	Dispatched	Travel to Utah.
5/25/2023	20:19	N/U Pressure Test	CM thinking Saturday PU tools.

5/25/2023	21:00	Dispatched	Dispatched to location. 40 miles. Turned around due to well conditions.
5/26/2023	8:51	Drilling to Core Point	RIH to drill last 500' to Core Point, Mark will check in at the rig this afternoon.
5/26/2023	10:00	Dispatched	Left Casper en route to Utah. Made it to Beaver, Utah. Hotel.
5/26/2023	15:09	Arrived on site	Currently building new Directional BHA to drill to 9800'+-. Coring sensors are seated in Coring assembly.
5/27/2023	9:01	Core Point Reached	9800'. Bottoms up and POOH to run Gyro. EST picking up tools ,late this evening or early AM.
5/27/2023	9:01	Core Point Reached	9800'. Bottoms up and POOH to run Gyro. EST picking up tools ,late this evening or early AM.
5/27/2023	9:01	Core Point Reached	9800'. Bottoms up and POOH to run Gyro. EST picking up tools ,late this evening or early AM.
5/27/2023	16:05	Rig Service	Laying out MWD and Directional tools to set up for GYRO.
5/28/2023	13:39	Rig Service	Running wire line. Had problems with GYRO. Displacing mud as well. EST picking up tools is this evening.
5/28/2023	22:30	Safety Meeting	Safety meeting with crew before picking up tools.
5/28/2023	22:45	Rigging Up	Make up bit 3409-05 (911). Pick up 60' core bbls. Make up jar.
5/28/2023	23:45	Running In	Run in hole to cut core #1. Trip schedule and pipe fill as per Utah Forge recommendations.
5/29/2023	4:30	Running In	Trip to 6000', circulate bottoms up. Then continue to bottom.
5/29/2023	6:24	Running In	Core #1 currently at 8513'.
5/29/2023	8:00	Tagged Bottom	Reset hook load and bottoms up.
5/29/2023	9:06	Circulate & Condition Mud	Drop ball at 250 GPM. PSI =154. Landed @9:24 PSI=177.
5/29/2023	9:34	Started Coring	9800'. WOB-4K. GPM-360. PSI-374. Rotary-37.
5/29/2023	11:28	Coring Ahead	Currently at 9804' (4' in). 8K WOB. Rotary-45. PSI- 280. GPM-280. Torque 23000. While five foot stick marks the driller had orders to turn on the soft torque. Lost all advancements to further the hole. Waited 40 minutes and asked to turn off soft torque system. Granted. Brought pumps to 280 and rotary to 35 and added 2K WOB. ROP came back to 2.0-2.5 an hour.
5/29/2023	17:22	Coring Ahead	10' cut to depth of 9810'. Running 13k wob, 300 gpm, 300 psi, 45 rpm, 23000 tq.
5/29/2023	22:00	Jammed in Hole	Rop fell off. Jammed bbl.
5/29/2023	23:00	POOH To Recover Core	Pull out of hole to recover core #1.
5/30/2023	3:30	Safety Meeting	Safety meeting with crew before recover core #1.
5/30/2023	3:45	Begin Recovering Core	Recover core #1.
5/30/2023	4:45	Core Recovered	Recovered 16.6' of 17' cut. No deployments.

5/30/2023	5:00	Rig Down	Pull to bit. Break off bit #3409-05 (911), bit damaged. Cutters missing and defaced. Wear to matrix.
5/30/2023	6:00	Standby	Wait on orders as to proceed.
5/30/2023	8:10	Rig Down	Lay down Coring tools and prep for a gyro run while waiting for 8.75 drill bit to arrive to clean hole for next core run.
5/30/2023	10:27	Core Recovered	During processing a re- measurement of core is 16.60 Cut and processed and put in core handling box.
5/31/2023	5:16	Clean Out Run	Currently at 2189' coming out after Gyro. Plan as it stands now run in with 8 3/4" bit and clean hole to pick up coring tools.
6/1/2023	5:30	Safety Meeting	Location safety meeting in command center.
6/1/2023	5:30	Safety Meeting	Safety meeting with Co-man and Night crew.
6/1/2023	5:45	Rigging Up	Pickup 60 ft 700 Series JMS Core Barrel.
6/1/2023	6:00	Safety Meeting	Safety meeting with day crew on finishing up building a 60' JMS System and changing bearing assembly.
6/1/2023	7:30	Running In	Going to strap in hole and stage pumps for cool down procedures. Currently working on ST-80.
6/1/2023	8:10	Running In	ST-80 Fixed. Running in the hole.
6/1/2023	13:29	Circulate & Condition Mud	Fill pipe and pump for an hour. Currently at 6030'
6/1/2023	14:20	Running In	Start running in hole.
6/1/2023	15:04	Running In	Currently at 7083'
6/1/2023	17:15	Running In	Core#2 currently at 9174' washing to bottom from here to Core Point. 9823'
6/1/2023	18:00	Wash / Ream	Ream to Btm high torque put Rabbit on helped to get Btm reduced torque and wt.
6/1/2023	19:00	Circulate & Condition Mud	Tag Btm Circulate Btms up.
6/1/2023	21:41	Started Coring	Drop ball start Core #1 from 9823.0 ft.
6/2/2023	5:45	Coring Ahead	Cored 22 ft cored to 9845.0 ft. With 7 ft/lbs, 30 rpm, 320 gpm.
6/2/2023	6:19	Coring Ahead	Currently at 9846' (23' in). WOB-7K. Rotary-32. GPM-320. PSI-305. Torque-22K.
6/2/2023	8:40	End Of Run	Cut 30'. last two foot of core run we did a step test. Brought rotary up by 5 twice to 50 rotary and staged WOB up to 12K. Pulled to 430 and broke over came up 5 more feet and broke over again. Came to bottom no problem and brought pump up to 400 GPM and did bottoms up .
6/2/2023	10:00	POOH To Recover Core	Pulled off bottom and every 5' up it would pull 30 over even out of core hole. EST on bank 17:00-19:00.
6/2/2023	16:00	POOH To Recover Core	Currently at 844' . EST on bank is 17:00.
6/2/2023	16:00	POOH To Recover Core	Currently at 844' . EST on bank is 17:00.

6/2/2023	16:41	Rig Down	ST80 blew a hose. Repairs are being made.
6/2/2023	16:41	Rig Down	ST80 blew a hose. Repairs are being made.
6/2/2023	17:12	Safety Meeting	Unloading and laying down 60' JMS System.
6/3/2023	7:01	Safety Meeting	ZOOM meeting Utah forge and Texas AM. Current operation reamed core hole to 9854'. POOH and put a mud motor and a 6 blade drill bit to drill to core point.
6/3/2023	8:26	Rigging Up	Processed core and changed out Stab sensor 1089 and replaced it with 1178.
6/3/2023	11:20	POOH to P/U Coring BHA	Currently POOH at 3192' core point will be 10250+-
6/4/2023	7:22	Core Point Reached	10250'. Bottoms up and POOH. EST picking up tools is 16:00
6/4/2023	16:30	Safety Meeting	Putting 60' JMS System together with bit CCI-713 #4219-01.
6/4/2023	16:30	Safety Meeting	Putting 60' JMS System together with bit CCI-713 #4219-01.
6/4/2023	18:00	Running In	RIH with 60 ft JMS 700 Series Core Barrel with Drillformance 713 8 3/4 x 4 Core Bit. Ser.# CCI-4219-01
6/5/2023	3:30	Wash / Ream	Wash from 9000 ft to Btm.
6/5/2023	5:30	Circulate & Condition Mud	Tag Btm Circulate Btms up.
6/5/2023	6:11	Circulate & Condition Mud	Bottoms up . Currently at 5161 strokes .
6/5/2023	6:11	Circulate & Condition Mud	Bottoms up . Currently at 5161 strokes .
6/5/2023	7:38	Started Coring	Hook load calibration three times. Weight is off by 10 then 5 . Took 10 minutes for Revit to find its sweet spot. Rig dumped 7K on a limit of 4K.
6/5/2023	11:18	Coring Ahead	Currently at 10254' (4' in). WOB-8K. Rotary-35. GPM-320. PSI-330. Torque-25K
6/5/2023	15:13	Jammed in Hole	Core bbl started stacking weight and No drill off. POOH.
6/5/2023	15:31	POOH To Recover Core	Cut 6.5'
6/5/2023	20:15	Begin Recovering Core	Broke topm sub pulled up alm backoff. Cut-6.6 Rec-5.5 hard garnet.
6/5/2023	20:30	Safety Meeting	Safety meeting with Co-man Night crew.
6/5/2023	22:30	Rig Down	Layout barrels. Bit only had one good inside gauge cutter rest of bit looked good. Shoe had scaring that it was riding on btm of bit.
6/5/2023	22:35	Clean Out Run	Rig going in with 8 3/4 bit to advanced the hole by 7 or 8 ft to gives us 15 ft of rat hole if they decide to go with same coring BHA. Will discuss in morning might go in normal btm barrel.
6/6/2023	15:03	Safety Meeting	Picking up 60' JMS System with bit CCI-913#3409 -05. Changed bearings. lead is set at 1.750.
6/6/2023	16:32	Running In	Core #4.

6/6/2023	23:30	Wash / Ream	Wash to Btm.
6/7/2023	0:00	Circulate & Condition Mud	Tag Btm Circulate Btms up.
6/7/2023	1:20	Started Coring	Drop ball start Core # 4 from 10264.0 ft
6/7/2023	1:45	Started Coring	Ball seated University want to do a rotary step test. At different rpm's. Started at 35, 40, 45, 50, 55, and 60 rpm's.
6/7/2023	3:20	Started Coring	Start Core #4 at 10264.0 5 ft/lbs, 50 rpm's, 405 g.
6/7/2023	6:51	Coring Ahead	Currently at 10268' WOB-12K. Rotary-35. GPM-400. PSI. 563.
6/7/2023	9:02	Coring Ahead	Currently at 10270'. On top of rotating head. Increased WOB to 16K to get through. Co.Man said when we get through start adding weight.
6/7/2023	11:11	Jammed in Hole	10272' loss of torque and no drill off. Brought weight slowly to 20K with no advancement of the hole. POOH.
6/7/2023	11:47	POOH To Recover Core	Core #4. Cut 7.8 foot.
6/7/2023	15:47	Safety Meeting	Laying out 60'JMS System and pulling up to the bit.
6/7/2023	17:26	Core Recovered	Laying out aluminum.Recovery 4.60. No Deployments. Bit CCI-913#3409-05 multiple cutter damage.
6/7/2023	18:22	Standby	Canamera on-site reps held meeting with Utah Forge reps and determined a clean out run is necessary.
6/7/2023	20:00	Clean Out Run	RIH to cleanout lost core and advance the hole by couple of feet.
6/8/2023	5:48	POOH to P/U Coring BHA	Currently at 5316.00
6/8/2023	9:03	Safety Meeting	Building a standard 60' JMS System.
6/8/2023	10:00	Dispatched	Dispatched back to location. Sean Leaving.
6/8/2023	10:33	Running In	Core #5 60' JMS System with 8.44 Stabs and Bit CCI-713 # 3409-01.
6/8/2023	15:28	Rig Down	Currently at 5534' . Crown O Matic is down.
6/8/2023	18:00	Rig Down	Waiting for parts and crane to show up wont be there till tomorrow sometime.
6/9/2023	7:40	Rig Down	Current operations waiting on crown o Matic and crane. No EST on arrival. Waiting on arrival of the Governor of Utah.
6/9/2023	19:41	Running In	Rig fixed.tripping in for core #5
6/9/2023	21:45	Running In	Company man called. Rig repaired and going to continue running in hole with recommended cooling schedule.
6/10/2023	3:15	Tagged Bottom	Tag bottom @ 10,274'.
6/10/2023	3:20	Circulate & Condition Mud	Circulate bottoms up. Drop and pump down core ball. Record hook loads 430 k up/ 255 k rot/ 185 k down.



6/10/2023	3:37	Tagged Bottom	Bottoms up and pump ball down.
6/10/2023	5:00	Started Coring	Core #5. 10274'. WOB-2-3K Rotary-20. GPM - 400. PSI-504. Torque-22K.
6/10/2023	8:05	Coring Ahead	Currently at 10277'. Utah Forge requested to bring rotary up in stages to 50 RPM and add weight. Was told not to touch pump at all.
6/10/2023	12:00	Coring Ahead	Currently at 10282'. WOB-7-8K. Rotary-35. GPM-369. PSI-527.Torque-23K.
6/10/2023	16:58	Coring Ahead	Currently at 10288'. WOB-7-8K Rotary-35. GPM-389. PSI-500. Torque 22K .Driller was told to bring pump back up to 389 from 360. Lost torque.
6/10/2023	22:50	Coring Ahead	17' cut to depth of 10,291'. Running 12.2 k wob, 45 rpm, 380 gpm, 507 psi, 23 k wt.
6/11/2023	4:31	End Of Run	Cut 30' to depth of 10,304'. End of run. Allow wt on bit to drill off. No visible break off bottom.
6/11/2023	5:00	POOH To Recover Core	Start trip out of hole to recover core #5. No trip schedule. Just be easy in and out of slips.
6/11/2023	10:45	Safety Meeting	Laying out 60' BHA . Core #5
6/11/2023	11:32	Core Recovered	Cut 30' and Rec-27.95. Primary tube deployed at 8' in to core. Secondary deployment tube stayed stationary.
6/11/2023	12:35	Rig Down	Laying out core bbls and pull bit to prep for a drill ahead to next core point. Bit has chipped cutters and 5 jets partially plugged. In side bit there is a burnt coating build up that will need sand blasted off.
6/11/2023	18:00	Drilling Ahead	Drill to next core point.
6/11/2023	23:00	Core Point Reached	Drill 126' to depth of 10,430'.
6/11/2023	23:30	POOH to P/U Coring BHA	Pull out of hole to pick up tools.
6/12/2023	5:15	Safety Meeting	Safety meeting with crew before picking up tools.
6/12/2023	5:30	Rigging Up	Make up bit #3409-05 (913 w/ Censor). Make up 60' outer bbls.
6/12/2023	7:10	Running In	Running in for core #6.
6/12/2023	15:08	Tagged Bottom	Core point 10430'.
6/12/2023	15:15	Circulate & Condition Mud	Bottoms up. 8500 Strokes.
6/12/2023	16:54	Started Coring	Core #6. 10430' 60' JMS. Bit CCI-913 3409-05. WOB-4K. Rotating-40. GPM-400. Torque-24K. PSI-582.
6/12/2023	16:55	Started Coring	Start core #6 @ depth of 10,430'. Running 4 wob, 40 rpm, 500 psi, 24,000 tq. 399 gpm.
6/12/2023	18:09	Coring Ahead	Currently at 10432' .WOB- 5K. Rotary-40. GPM-399. PSI-534. Torque-26K.
6/12/2023	20:55	Coring Ahead	4' cut currently @ 10,434'. Running 7-8 wob, 40 rpm, 389 gpm, 650 psi, 25,000 tq. Pressure erratically increasing and decreasing from 741-900 psi.

6/13/2023	0:23	Coring Ahead	7' cut to depth of 10,437'. Running 12-13k wob, 40 rpm, 830 psi, 24,000 tq. Step up wob to 15k as per Utah Forge.
6/13/2023	0:23	Coring Ahead	7' cut to depth of 10,437'. Running 12-13k wob, 40 rpm, 830 psi, 24,000 tq. Step up wob to 15k as per Utah Forge.
6/13/2023	4:08	Coring Ahead	14' cut currently @ 10,444'. Running 15k wob, 40 rpm, 368 gpm, 882 psi, 23,000 tq.
6/13/2023	6:41	Coring Ahead	Currently at 10448'. WOB-16K. Rotary 40. GPM-355-385. PSI- 600-1000. Torque-24k
6/13/2023	15:50	End Of Run	Cut 30' WOB-20K. Rotary-40. GPM-380. PSI-877. Torque-23K. Drilling Off WOB for 30 minutes. Tool joint directly under rotating head.
6/13/2023	16:27	POOH To Recover Core	Pulled 460K . Came back down and didn't stack weight. Pulled back up and breaking over at 450K. POOH.
6/13/2023	17:00	POOH To Recover Core	Pull out of hole to recover core #6.
6/13/2023	21:30	Safety Meeting	Safety meeting with crew before recovering core #6.
6/13/2023	21:45	Begin Recovering Core	Recover core #6.
6/13/2023	22:30	Core Recovered	Recovered 25.70' of 30' cut. Both sleeves deployed. 1st deployed @ 14'. 2nd deployed @ 15'.
6/13/2023	23:15	L/D Coring BHA	Lay down core bbls for clean out run, due to missing core from run #6.
6/14/2023	0:05	Clean Out Run	Run in hole to clean up bottom due to missing 4.30' of core #6.
6/14/2023	6:30	Clean Out Run	Advancing the hole 2' to 10462'.
6/14/2023	8:45	POOH to P/U Coring BHA	EST picking up core tools 14:00
6/14/2023	14:25	Safety Meeting	Picking up 60' JMS with Bit CCI-713 ION.#3409-03
6/14/2023	15:30	Running In	Core #7 lead is set to 1.500
6/14/2023	18:30	Running In	Run in hole to cut core #7 @ 10,462'. Use recommended cooling schedule to bottom.
6/14/2023	22:40	Tagged Bottom	Wash down to bottom. Tag bottom @ 10462'.
6/14/2023	22:45	Circulate & Condition Mud	Circulate bottoms up. Drop ball @ 23:35 @ 200 gpm= 99 psi/ Landed @ 23:53 @ 200 gpm= 115 psi. Step test with rotary before start core.
6/15/2023	0:35	Started Coring	Tag bottom with auto driller and Revit engaged. Begin core #7 @ 10,462'. Running 3k wob, 45 rpm, 428 gpm= 590 psi, 25,000 tq.
6/15/2023	4:18	Coring Ahead	7' cut to depth of 10,469'. Running 7k wob, 45 rpm, 426 gpm = 591 psi, 26,600 tq.
6/15/2023	6:22	Coring Ahead	Currently at 10470'. WOB-10K. Rotary-45. GPM-427. PSI-591. Torque-26K.
6/15/2023	10:14	Coring Ahead	Currently at 10474' Utah Forge agreed to bring pump strokes down to 390.

6/15/2023	16:30	Coring Ahead	Currently at 10483'. WOB-14K. Rotary -35. GPM-375. PSI-480. Torque-26K.
6/15/2023	20:08	Coring Ahead	25'cut to depth of 10,487'. Running 16k wob, 40 rpm, 384 gpm= 458 psi, 25k tq.
6/15/2023	23:08	End Of Run	31' cut to depth of 10,493'. Shut off auto driller and allow wob to drill off from 18k down to 11k wob. (About 30 minutes). Did not see a break off bottom due to hole drag.
6/15/2023	23:45	POOH To Recover Core	Pull out of hole to recover core #7. No trip schedule.
6/16/2023	4:11	Safety Meeting	Laying out and laying down 60' JMS System.
6/16/2023	5:30	Begin Recovering Core	All tools soft broke and off the floor. Cut 31' and Recovery is 27'. Bit has cutter damage and no jets we're plugged. Primary deployment tube deployed at 6' and Secondary deployment tube deployed at 8-9' .
6/16/2023	6:31	Core Recovered	27'. All processing equipment is in job boxes and all tools and bits are locked in job box.

## Paramaters

	Index	Depth (ft)	Time	Circulation (gpm)	ROP f/hr	Pressure PSI	WOB lbs	Torque ft-lbs
Run 1	1	9801.000	10:26 AM	360.000	1.153	374.000	4.000	23000.000
	2	9802.000	10:42 AM	300.000	3.749	280.000	5.000	15000.000
	3	9803.000	11:00 AM	300.000	3.333	270.000	6.000	23000.000
	4	9804.000	11:28 AM	300.000	2.142	270.000	8.000	20000.000
	5	9805.000	1:12 PM	300.000	0.576	270.000	9.000	23000.000
	6	9806.000	2:22 PM	300.000	0.857	270.000	13.000	23000.000
	7	9807.000	3:01 PM	300.000	1.538	270.000	13.000	17000.000
	8	9808.000	4:24 PM	300.000	0.722	270.000	13.000	17000.000
	9	9809.000	4:51 PM	300.000	2.222	270.000	13.000	17000.000
	10	9810.000	5:22 PM	300.000	1.935	285.000	13.000	17000.000
	11	9811.000	5:51 PM	300.000	2.068	285.000	13.000	17000.000
	12	9812.000	6:19 PM	300.000	2.142	285.000	13.000	17000.000
	13	9813.000	6:53 PM	300.000	1.764	285.000	13.000	17000.000
	14	9814.000	7:29 PM	300.000	1.666	285.000	14.000	17000.000
	15	9815.000	8:04 PM	300.000	1.714	285.000	14.000	15000.000
	16	9816.000	8:48 PM	300.000	1.363	285.000	15.000	15000.000
	17	9817.000	9:50 PM	300.000	0.967	285.000	15.000	15000.000
Run 2	1	9824.000	9:56 PM	320.000	4.000	290.000	3.000	21000.000
	2	9825.000	10:16 PM	320.000	3.000	290.000	4.500	22000.000
	3	9826.000	10:36 PM	320.000	3.000	290.000	6.000	22000.000
	4	9827.000	11:02 PM	320.000	2.307	290.000	6.000	22000.000
	5	9828.000	11:17 PM	320.000	4.000	290.000	6.000	21000.000

	Index	Depth (ft)	Time	Circulation (gpm)	ROP f/hr	Pressure PSI	WOB lbs	Torque ft-lbs
Run 2	6	9829.000	11:38 PM	320.000	2.857	290.000	6.000	21000.000
	7	9830.000	11:59 PM	320.000	2.857	290.000	7.000	21000.000
	8	9831.000	12:27 AM	320.000	2.142	290.000	7.300	22000.000
	9	9832.000	12:51 AM	320.000	2.500	290.000	7.000	22000.000
	10	9833.000	1:15 AM	320.000	2.500	290.000	7.000	24000.000
	11	9834.000	1:32 AM	320.000	3.529	290.000	7.500	24000.000
	12	9835.000	1:52 AM	320.000	3.000	290.000	7.500	25000.000
	13	9836.000	2:21 AM	320.000	2.068	290.000	7.500	25000.000
	14	9837.000	2:49 AM	320.000	2.142	290.000	7.500	25000.000
	15	9838.000	3:14 AM	320.000	2.399	290.000	7.000	22000.000
	16	9839.000	3:35 AM	320.000	2.857	290.000	7.000	22000.000
	17	9840.000	3:57 AM	320.000	2.727	290.000	7.000	22000.000
	18	9841.000	4:16 AM	320.000	3.157	290.000	7.000	22000.000
	19	9842.000	4:35 AM	320.000	3.157	290.000	7.500	22000.000
	20	9843.000	5:02 AM	320.000	2.222	290.000	7.000	22000.000
	21	9844.000	5:29 AM	320.000	2.222	290.000	7.000	22000.000
	22	9845.000	5:57 AM	320.000	2.142	290.000	7.000	24000.000
	23	9846.000	6:19 AM	320.000	2.727	290.000	7.000	22000.000
	24	9847.000	6:46 AM	320.000	2.222	290.000	7.000	22000.000
	25	9848.000	7:16 AM	320.000	2.000	290.000	7.000	22000.000
	26	9849.000	7:46 AM	320.000	2.000	290.000	7.000	22000.000
	27	9850.000	8:04 AM	320.000	3.333	290.000	8.000	22000.000
	28	9851.000	8:21 AM	320.000	3.529	310.000	8.000	22000.000
	29	9852.000	8:31 AM	320.000	5.999	310.000	9.000	22000.000

	Index	Depth (ft)	Time	Circulation (gpm)	ROP f/hr	Pressure PSI	WOB lbs	Torque ft-lbs
Run 2	30	9853.000	8:40 AM	320.000	6.666	310.000	10.000	22000.000
Run 3	1	10251.000	9:00 AM	320.000	0.731	295.000	4.000	24000.000
	2	10252.000	10:00 AM	300.000	1.000	295.000	6.000	24000.000
	3	10253.000	10:44 AM	280.000	1.363	250.000	8.090	21000.000
	4	10254.000	11:48 AM	320.000	0.937	250.000	10.000	24000.000
	5	10255.000	12:48 PM	320.000	1.000	315.000	11.000	24000.000
	6	10256.000	2:00 PM	320.000	0.833	297.000	12.000	24000.000
Run 4	1	10265.000	3:29 AM	400.000	3.333	469.000	3.000	22.500
	2	10266.000	3:45 AM	400.000	3.749	408.000	8.000	22.500
	3	10267.000	4:24 AM	400.000	1.538	496.000	10.000	22.500
	4	10268.000	6:50 AM	400.000	0.410	496.000	12.500	19.000
	5	10269.000	7:13 AM	400.000	2.608	496.000	13.000	19.000
	6	10270.000	9:00 AM	400.000	0.560	563.000	16.000	19.000
	7	10271.000	9:37 AM	400.000	1.621	563.000	18.000	18.000
	8	10272.000	11:10 AM	400.000	0.645	563.000	20.000	16.000
Run 5	1	10275.000	5:52 AM	400.000	1.153	504.000	3.000	22000.000
	2	10276.000	6:43 AM	400.000	1.176	504.000	4.000	22000.000
	3	10277.000	8:04 AM	400.000	0.740	504.000	6.000	22000.000
	4	10278.000	10:21 AM	400.000	0.437	504.000	8.000	22000.000
	5	10279.000	10:47 AM	400.000	2.307	512.000	8.000	22000.000
	6	10280.000	11:10 AM	400.000	2.608	512.000	8.000	22000.000
	7	10281.000	11:34 AM	400.000	2.500	527.000	10.000	23000.000
	8	10282.000	12:01 PM	400.000	2.222	527.000	10.000	23000.000
	9	10283.000	12:31 PM	400.000	2.000	527.000	10.000	23000.000
	10	10284.000	1:24 PM	400.000	1.132	500.000	10.000	23000.000

	Index	Depth (ft)	Time	Circulation (gpm)	ROP f/hr	Pressure PSI	WOB lbs	Torque ft-lbs
Run 5	11	10285.000	2:26 PM	360.000	0.967	450.000	10.000	23000.000
	12	10286.000	3:19 PM	360.000	1.132	450.000	10.000	23000.000
	13	10287.000	4:07 PM	360.000	1.250	450.000	10.000	23000.000
	14	10288.000	4:59 PM	380.000	1.153	500.000	10.000	23000.000
	15	10289.000	6:37 PM	380.000	0.612	500.000	10.800	23000.000
	16	10290.000	8:48 PM	380.000	0.458	500.000	11.500	23000.000
	17	10291.000	10:50 PM	380.000	0.491	510.000	11.500	23000.000
	18	10292.000	11:24 PM	380.000	1.764	510.000	14.500	23000.000
	19	10293.000	11:43 PM	380.000	3.157	507.000	18.000	23000.000
	20	10294.000	11:56 PM	380.000	4.615	507.000	18.000	23000.000
	21	10295.000	12:10 AM	380.000	4.285	507.000	18.000	23000.000
	22	10296.000	12:23 AM	380.000	4.615	556.000	17.000	23000.000
	23	10297.000	12:38 AM	380.000	4.000	495.000	18.000	22800.000
	24	10298.000	12:56 AM	380.000	3.333	495.000	19.000	22800.000
	25	10299.000	12:56 AM	380.000		495.000	19.000	22800.000
	26	10300.000	1:30 AM	380.000	1.764	495.000	20.000	22800.000
	27	10301.000	2:53 AM	380.000	0.722	482.000	23.000	23000.000
	28	10302.000	3:28 AM	380.000	1.714	482.000	23.000	23000.000
	29	10303.000	4:00 AM	380.000	1.875	482.000	23.000	23000.000
	30	10304.000	4:31 AM	380.000	1.935	472.000	23.000	23000.000
Run 6	1	10431.000	5:22 PM	427.000	2.222	582.000	4.000	24000.000
	2	10432.000	6:09 PM	427.000	1.276	582.000	5.000	26000.000
	3	10433.000	7:35 PM	427.000	0.697	580.000	6.000	26000.000
	4	10434.000	8:55 PM	389.000	0.750	650.000	7.000	25000.000

	Index	Depth (ft)	Time	Circulation (gpm)	ROP f/hr	Pressure PSI	WOB lbs	Torque ft-lbs
Run 6	5	10435.000	9:59 PM	389.000	0.937	650.000	8.000	25000.000
	6	10436.000	11:35 PM	389.000	0.625	650.000	9.000	25000.000
	7	10437.000	12:23 AM	375.000	1.250	769.000	10.000	25000.000
	8	10438.000	12:48 AM	375.000	2.399	580.000	10.000	24000.000
	9	10439.000	1:14 AM	377.000	2.307	744.000	15.000	23000.000
	10	10440.000	1:58 AM	361.000	1.363	924.000	16.000	23000.000
	11	10441.000	2:23 AM	361.000	2.399	924.000	16.000	23000.000
	12	10442.000	2:49 AM	382.000	2.307	651.000	16.000	24000.000
	13	10443.000	3:31 AM	382.000	1.428	882.000	16.000	23000.000
	14	10444.000	4:08 AM	382.000	1.621	882.000	16.000	23000.000
	15	10445.000	4:42 AM	382.000	1.764	1031.000	16.000	23000.000
	16	10446.000	5:31 AM	382.000	1.224	1031.000	16.000	23000.000
	17	10447.000	5:57 AM	382.000	2.307	1031.000	16.000	23000.000
	18	10448.000	6:41 AM	382.000	1.363	1031.000	16.000	23000.000
	19	10449.000	7:30 AM	382.000	1.224	1031.000	16.000	23000.000
	20	10450.000	8:13 AM	382.000	1.395	961.000	17.000	25000.000
	21	10451.000	9:05 AM	382.000	1.153	961.000	17.000	25000.000
	22	10452.000	9:56 AM	382.000	1.176	961.000	17.000	25000.000
	23	10453.000	10:37 AM	382.000	1.463	961.000	18.000	25000.000
	24	10454.000	11:32 AM	382.000	1.090	961.000	19.000	25000.000
	25	10455.000	12:30 PM	382.000	1.034	961.000	19.000	25000.000
	26	10456.000	1:16 PM	382.000	1.304	949.000	19.000	25000.000
	27	10457.000	1:57 PM	382.000	1.463	848.000	19.000	25000.000
	28	10458.000	2:30 PM	382.000	1.818	848.000	20.000	25000.000



	Index	Depth (ft)	Time	Circulation (gpm)	ROP f/hr	Pressure PSI	WOB lbs	Torque ft-lbs
Run 6	29	10459.000	3:13 PM	382.000	1.395	848.000	20.000	25000.000
	30	10460.000	3:50 PM	382.000	1.621	848.000	20.000	25000.000
Run 7	1	10463.000	12:45 AM	428.000	5.999	604.000	3.000	25000.000
	2	10464.000	1:04 AM	428.000	3.157	587.000	3.500	25000.000
	3	10465.000	1:35 AM	428.000	1.935	587.000	3.500	25000.000
	4	10466.000	2:11 AM	428.000	1.666	587.000	4.000	25800.000
	5	10467.000	2:44 AM	428.000	1.818	580.000	4.000	26000.000
	6	10468.000	3:26 AM	428.000	1.428	580.000	5.000	26000.000
	7	10469.000	4:18 AM	428.000	1.153	589.000	6.000	26800.000
	8	10470.000	6:23 AM	428.000	0.480	591.000	8.000	26600.000
	9	10471.000	8:26 AM	428.000	0.487	591.000	10.000	26600.000
	10	10472.000	9:05 AM	384.000	1.538	510.000	13.000	24000.000
	11	10473.000	9:39 AM	384.000	1.764	510.000	13.000	24000.000
	12	10474.000	10:14 AM	375.000	1.714	455.000	13.000	24000.000
	13	10475.000	10:44 AM	375.000	2.000	455.000	13.000	24000.000
	14	10476.000	11:21 AM	375.000	1.621	455.000	13.000	24000.000
	15	10477.000	11:52 AM	375.000	1.935	480.000	13.000	25000.000
	16	10478.000	12:23 PM	375.000	1.935	480.000	13.000	25000.000
	17	10479.000	12:58 PM	375.000	1.714	480.000	13.000	25000.000
	18	10480.000	2:00 PM	375.000	0.967	480.000	13.000	25000.000
	19	10481.000	2:40 PM	375.000	1.499	480.000	13.000	25000.000
	20	10482.000	3:56 PM	384.000	0.789	480.000	14.000	25000.000
	21	10483.000	4:30 PM	384.000	1.764	480.000	14.000	25000.000
	22	10484.000	5:43 PM	384.000	0.821	461.000	15.000	25000.000
	23	10485.000	6:40 PM	384.000	1.052	461.000	15.000	25000.000
	24	10486.000	7:28 PM	384.000	1.250	461.000	16.000	25000.000

	Index	Depth (ft)	Time	Circulation (gpm)	ROP f/hr	Pressure PSI	WOB lbs	Torque ft-lbs
Run 7	25	10487.000	8:08 PM	384.000	1.499	458.000	16.000	25000.000
	26	10488.000	8:42 PM	384.000	1.764	458.000	16.000	25000.000
	27	10489.000	9:16 PM	384.000	1.764	458.000	17.000	25000.000
	28	10490.000	9:47 PM	384.000	1.935	458.000	17.000	25000.000
	29	10491.000	10:15 PM	384.000	2.142	458.000	17.000	25000.000
	30	10492.000	10:41 PM	384.000	2.307	451.000	18.000	25000.000
	31	10493.000	11:08 PM	372.000	2.222	448.000	18.000	25000.000